

SINOVILLE

FENCING



CORPORATE PROFILE

Sinoville Fencing Rosslyn

81 Willem Cruywagen Ave
Klerksoord, Pretoria,
Gauteng Province

Sinoville Fencing Kathu

Unit 4 Stokkiesdraai
Business Park, Cnr Deben
& Hotazel Rd, R380, Kathu,
Northern Cape Province

Sinoville Fencing Western Cape

Unit 18, 13 Patrys Crescent,
Okavango Park, Brackenfell
Cape Town,
Western Cape Province

Sinoville Fencing Highveld

Unit 2, Meltin Mini Factories,
38 Celsius Road, Middelburg,
Mpumalanga Province

Sinoville Projects

81 Willem Cruywagen Ave
Klerksoord,
Pretoria,
Gauteng Province

Sinoville Fencing Africa

81 Willem Cruywagen Ave
Klerksoord,
Pretoria,
Gauteng Province

Sinoville Fencing Tubatse

Rodium Street, Block 9
Shop 1, Steelpoort,
Limpopo Province

Sinostruct

37 Robyn Street
Klerksoord,
Pretoria
Gauteng Province

Sinoville Fencing Springbok

3158 Kwartsiet Street
Industrial Area
Springbok
Northern Cape Province

TABLE OF CONTENTS

About Us.....	03
Fencing.....	06
Steel	08
Security and Automation.....	09
Portfolio.....	10
Contact Us.....	11



Diamond Mesh



Steel Frames



Steel Structures



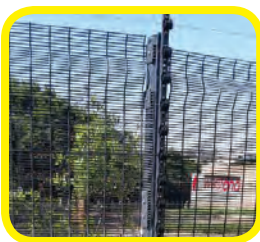
Electric Fencing



Game Fencing



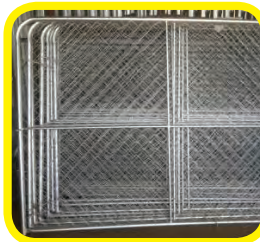
Razor Wire Fencing



Sinomax Clearview Security Fencing



Tennis Courts



Manufacturing



Palisade Gates

BACKGROUND

Sinoville Fencing started trading in 1969 and rose to become a prominent player in the fencing industry in Southern Africa. The Group has supplied fencing material and installed/erected fences from Cape Town to the Congo over the years. Our client-base ranges from the domestic/residential sector to the mining, agricultural, military, prison, commercial, aeronautical, security, hospitality and medical sectors all over Southern Africa.

Sinoville Fencing, has over the years operated from branches in Durban, Botswana, Witbank, Cape Town and Pretoria. Wherever the demand expected the Group to go, we went. Currently the Group's manufacturing activities are consolidated at the Group Head Office in Klerksoord north of Pretoria.

Sinoville Fencing is a fully fledged B-BBEE company with a current rating of Level 1, CIDB SQ 7 PE, SL 7 PE, CE 6 PE, GB 6 PE. Our annual Group turnover currently exceed R200 million.

The Group has branches based in Limpopo, Mpumalanga, Northern Cape, Western Cape and Gauteng Province, from where we serve the various economic sectors we chose to operate in. The other Provinces are serviced directly from the Group Head Office and via an extensive network of agencies who view the Sinoville Fencing Group as their preferred supplier. Sinoville Fencing Tubatse serves the mining region from Polokwane through to Lydenburg in the Mpumalanga province. In Highveld our branch focuses on the mining region covering the area from Emalahleni to Middelburg. The two branches situated respectively in Kathu and Springbok, Northern Cape serves the mining region covering area such as Hotazel, Postmasburg, Pofadder and Aggeneys. The recently established branch in Cape Town services the Western Cape Province.

The Group has extensive Export (Cross Border) experience in Sub-Saharan countries such as Botswana, Zimbabwe, Mozambique, Zambia, Namibia, DRC and recently Togo. To accommodate our cross border trade Sinoville Fencing Africa has been established.

The Sinoville Fencing Group employs 152 full time staff members and its network of approved subcontractors, including installation and logistical staff totals a further 97.

MISSION

Providing quality perimeter security solutions and structures to our customers while striving to nurture long term relationships by ensuring service excellence and cost effective modern technology solutions.



OBJECTIVES

Customer Service - To meet the customer's demands and encourage the customer to do more business with us through quick response time and constant engagement.

Efficiency - To improve on delivery time and continuous productivity efficiency through achievable targets.

Growth - To expand the manufacturing and retail capabilities to support all South African Provinces and Africa at large.

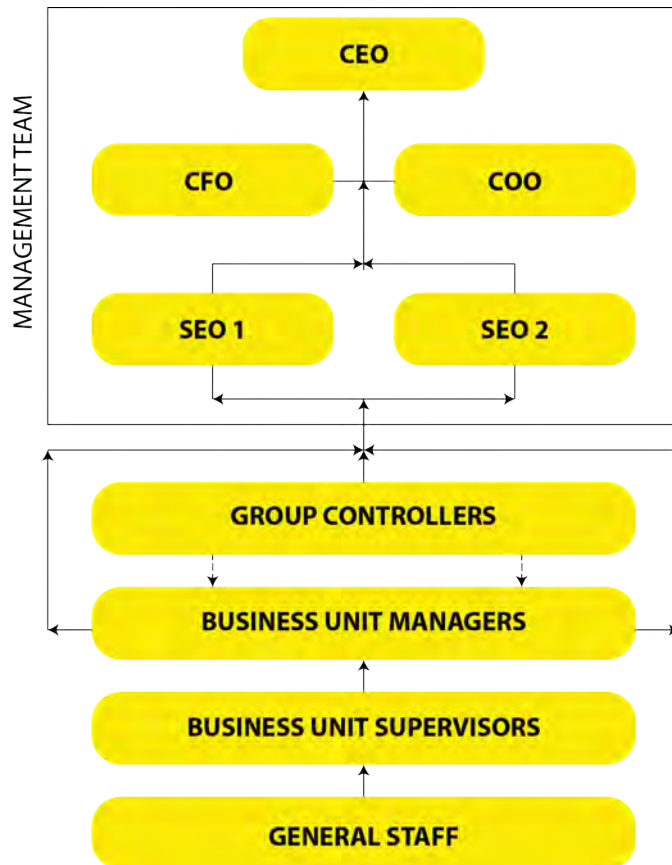
MANAGEMENT TEAM & STRUCTURE

The Group is in essence managed by a Management Team consisting of 3 Directors and 2 Senior Executives. Accumulatively the Management Team have more than 120 years of combined industry exposure ranging from development, manufacturing, trading, and installation projects.

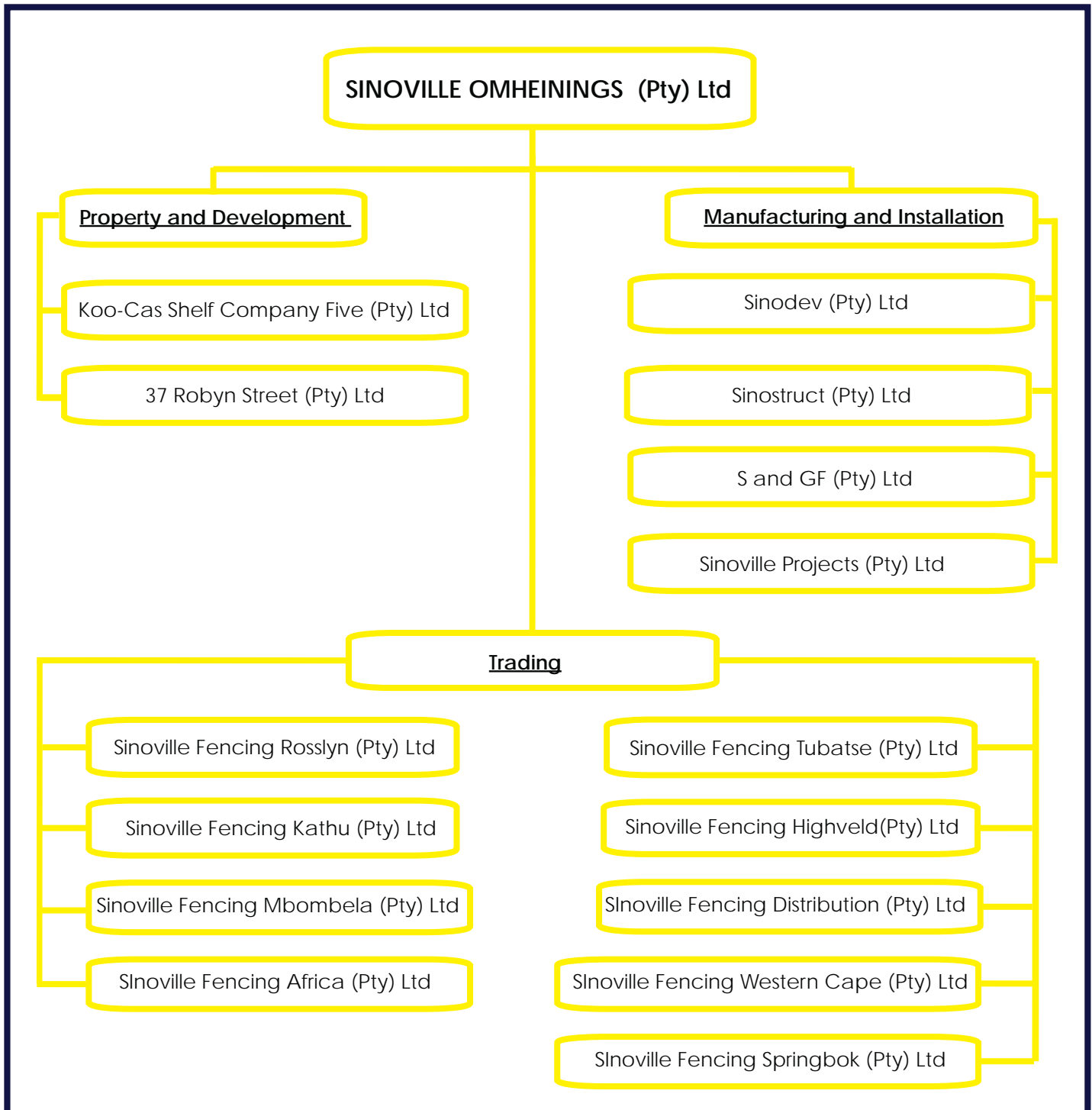
The Management Team holds various technical and academic/tertiary qualifications in Mechanical & Chemical Engineering, Quantity Surveying, Business Management, Financial Management, Corporate Governance, Company Direction and Sales and Marketing.

The Group is basically divided in Trading, Manufacturing and Projects, with certain business units focussing on purely Manufacturing and some purely on Trading and Projects. We have a strong drive to empower young staff and ensure that our middle management is mentored and developed to provide employment and business success in the future.

The Management Team is supported by a Level of Group Controllers, which deliver services to the Business Unit Managers which are reflected on the next level. The Business unit Managers are supported by the Business Unit Supervisors and general staff.



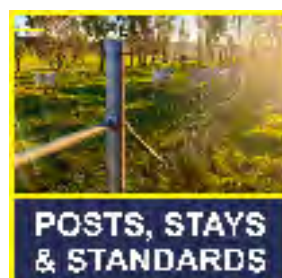
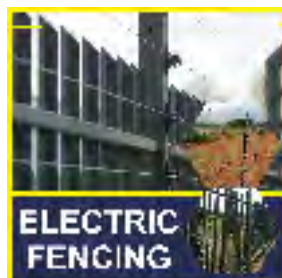
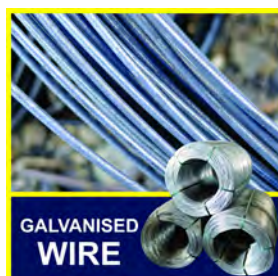
ORGANOGRAM



PRODUCTS

Sinoville Fencing is a manufacturer of fencing materials. Our product offering includes various configurations of razor wire, diamond mesh (chain link) fencing, palisade fencing, fence posts, fence stays, gates and all fence accessories required to erect fences for any type of application.

- Concertina Razor Wire Coils (BTC)
- Flat Wrap Razor Wire Sheets
- Single Strand Razor Wire
- Welded Mesh Fencing
- Barbed Wire
- Diamond Mesh
- Game Fencing
- Palisade Panels
- Farm Gates
- Gates Automation
- Sinomax Clearview Fencing
- Wire Netting
- Razor Mesh
- Razor Ribbon
- Galvanised Straining Wire
- Galvanised Binding Wire
- Field Fence
- Electric Fencing
- Speed Fencing
- Garage Automation



SINOVILLE FENCING

FENCING

SERVICES CONTRACTING

Contracting and installation services are provided to a wide range of clients - from private individuals to large companies. A specialized contracting division oversees the professional execution of the larger contracts, e.g. the mining, building, agricultural and civil sectors and other big corporate entities.

Typical applications involve the erection and installation of domestic, game, security and electric fencing, as well as access control, gate automation and other perimeter-security-related requirements such as camera systems. Sinoville Fencing's contracting division operates from all the branches serving their respective markets. Fence erection services are provided nationwide and beyond, for your convenience.

SERVICES RETAIL

The Group's manufacturing activities are consolidated at the Group's Head Office in Klerksoord, north of Pretoria, from where it distributes and exports fencing materials to local, regional and global customers. Fence erection and installation projects are also managed from here, and other branch locations, via our contracting division.

An on-site retail function, via counter sales, enhances our product offering and direct sales to the public at large is facilitated from the Pretoria, Tubatse, Kathu, Springbok, Middelburg (Highveld) and Cape Town sites.

- Public on site shop
- Distribution
- Repairs and Maintenance
- Installation



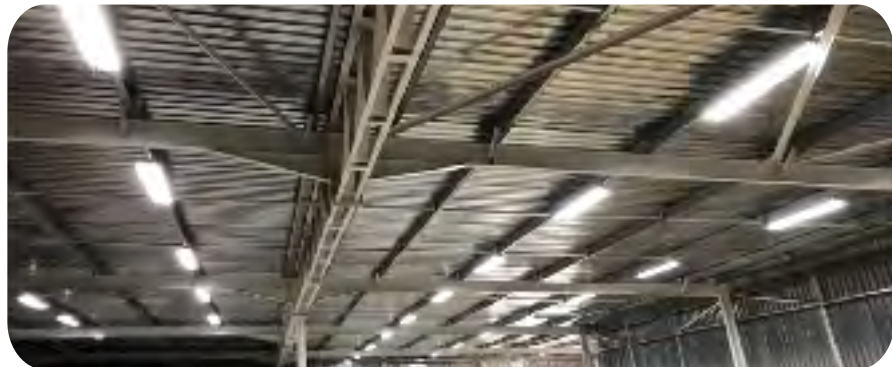
FABRICATION & MANUFACTURING

The Sinoville Fencing Group is a manufacturer and fabricator of steel components in various forms and shapes. We manufacture and supply IBR and corrugated roof sheets in various thickness (gauges) as well as bespoke security gates for various applications and configurations. Various types of posts, stays, and palisade panels are manufactured in-house and can be covered and coated to the client's requirements.

We supply and erect steel structures for end-user clients, and also sell turnkey solutions wholesale to property developers and specialist in the design of structures, using digital rendering tools on both architectural and engineering-driven projects. The group is also equipped to oversee the full erection and sheeting of the structure.

Some of the typical fabrication work we are experienced in is as follows:

- Conveyor Systems
- Building steel work
- Plate Girders
- Chutes
- Bins
- Tanks
- Sumps
- Steel Structures



SERVICES DETAILING

The drawing office has the ability to produce process flow diagrams, multi-disciplined conceptual layouts and fabrication detail including:

- Structural - Transfer towers, hangars, shopping centres, warehouses.
- Plate work - Bins, launders, under pans, tanks, chutes.
- Piping - Bends, flanges, T-pieces.
- Full model review / walk-through.
- Build your plant / equipment virtually before going live.
- Conveyors.
- Gentries, trestles, take-ups.

SINOVILLE FENCING

SECURITY & AUTOMATION

GATE MOTORS & CAMERA SYSTEMS

When it comes to top quality security systems, access control plays an integral role. One of the most basic, yet integral, aspects of security entails the prevention of unauthorized access to a premises. This type of system calls for the correct equipment for incoming and outgoing traffic. The Group has a wide range of gate motors that will suite any premises.

Camera systems are usually integral to any security solution. Each type of camera and its associated system have a specific place in a security solution. The Group can supply and install total security solutions including camera systems as per our clients requirements.



ELECTRIC FENCING

Electric fencing has played a pivotal role in securing both commercial and private premises. The Group ensures that every electric fencing system installed fits our client's specific needs. Our Group have years of experience in this field and use only the best quality to ensure our customers safety.



SINOVILLE

FENCING

PORTFOLIO

GROUP CLIENTS



ADT Security Services



Anglo Platinum



Tshwane University of Technology



Coega Development Corporation



PRASA



Samancor



Department of Transport



Consolidated Wire Industries



SANDF



University of Pretoria



Gautrain



Dwarsrivier



ERG



Eskom



Glencore



Agri SA

OUR DETAILS

Sinoville Fencing Rosslyn

Stand 81, Willem Cruywagen Ave
Klerksoord, Pretoria, Gauteng Province
Tel: +27 12 542 4780
Tel: +27 64 604 2277
E-Mail: sales@sinovillefencing.co.za

Sinoville Fencing Kathu

Unit 4 Stokkiesdraai Business Park
Cnr Deben & Hotazel Road R380
Kathu, Northern Cape Province
Tel: +27 53 215 0058
Tel: +27 76 924 6065
E-Mail: sales.k@sinovillefencing.co.za

Sinoville Projects

Stand 81, Willem Cruywagen Ave
Klerksoord, Pretoria,
Gauteng Province
Tel: +27 12 542 4780
Tel: +27 79 217 5454
E-Mail: info@sinovillefencing.co.za

Sinoville Fencing Western Cape

Unit 18, 13 Patrys Crescent, Okavango Park,
Brackenfell, Cape Town,
Western Cape Province
Tel: +27 87 237 9688
Tel: +27 72 838 6955
E-Mail: sales.ct@sinovillefencing.co.za



076 803 0648

General Number: +27 86 133 6237

[facebook.com/sinovillefencing](https://www.facebook.com/sinovillefencing)

Sinoville Fencing Tubatse

Rodium Street, Block 9, Shop 1,
Steelpoort, Limpopo Province
Tel: +27 13 230 3861
Tel: +27 84 602 2230
E-Mail: sales.t@sinovillefencing.co.za

Sinostruct

37 Robyn Street
Klerksoord, Pretoria
Gauteng Province
Tel: +27 12 023 3297
Tel: +27 76 132 3523
E-Mail: info@sinostruct.co.za

Sinoville Fencing Highveld

Unit 2, Meltin Mini Factories,
38 Celsius Road, Middelburg,
Mpumalanga Province
Tel: +27 13 170 3748
Tel: +27 79 083 3748
E-Mail: sales.h@sinovillefencing.co.za

Sinoville Fencing Africa

Stand 81, Willem Cruywagen Ave
Klerksoord, Pretoria,
Gauteng Province
Tel: +27 12 542 4780
Tel: +27 64 604 2277
E-Mail: export@sinovillefencing.co.za

Sinoville Fencing Springbok

3158 Kwartsiet Street
Industrial Area, Springbok
Northern Cape Province
Tel: +27 27 024 5320
Tel: +27 71 289 3670
E-Mail: sales.sp@sinovillefencing.co.za